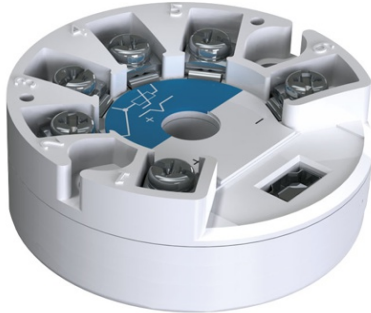


Temperature Transmitter

E2163



Features

- Conversion of RTD or TC signal to 4-20 mA current loop
- Configurable sensor type and output scale
- Linearisation of RTD and TC characteristics
- Mounting into DIN Form B terminal head

Description

Programmable transmitter with 4-20 mA current output is designed for mounting into DIN Form B terminal head of a temperature sensor or into IP65 rated enclosure to the wall.

The transmitter is intended for signal conditioning of most common resistance temperature detectors – Pt100, Pt500, Pt1000, Ni100, Cu50, Cu100, and most common thermocouples – Types B, J, K, L, N, R, S, T etc.

The sensor type, output scale, averaging time constant and other transmitter parameters can be configured using USB cable and the E2163 Configurator software.

Specifications

Input connection: 2-, 3- or 4-wire RTD, 2-wire TC

Output connection: 2-wire current-loop 4-20 mA

Resolution: 0,025 %FSO (12 bit)

Accuracy: ±0,25 %FSO for RTDs, ±0,5 %FSO for TCs

Operating conditions: -40...+85 °C, 5...95 %RH, non-condensing

Supply voltage: 12...36 VDC, nominal 24 VDC

Electromagnetic compatibility (CE marking):

according to 89-336-EEC and EN61326-1 requirements

Enclosure: white ABS, Ø44×H18 mm, protection class IP20

Mounting: into DIN Form B head, wall-mount box or on DIN-rail

Mounting holes: 2 × Ø5 mm, distance 33 mm, for DIN B head

Programming interface: mini USB

